

7mm in length, temperature of wide range (solvent proof)



SZ series measures 7mm in length and have stable characteristics at the temperature of wide range (-55 to +105°C).

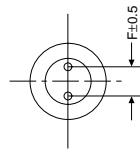
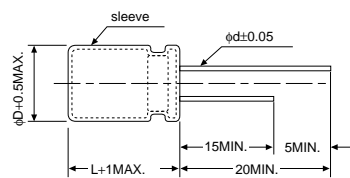
They are miniature, long life and solvent proof (within 3minutes).



Specifications

Items	Specifications					
Rated voltage (V)	6.3	10	16	25	35	50
Operating temperature (°C)	-55 to +105					
Capacitance tolerance (%)	±20 (120Hz)					
Tangent of loss angle(tan δ)(MAX.)(120Hz)	0.24	0.20	0.16	0.14	0.12	0.10
Leakage current (L.C.)(μA/after 2min.)(MAX.)	The greater value of either 0.01CV or 3					
Impedance (120Hz) ratio at low temperature (MAX.)	Z _{-40°C} /Z _{20°C}	3	2	2	2	2
	Z _{-55°C} /Z _{20°C}	5	4	4	3	3
High-temperature load 105°C 1000hrs. rated voltage applied	ΔC/C	Within ±25% of the initial value				
	tan δ	≤ Twice the initial standard				
	L.C.	≤ The initial standard				
Other characteristics	Conform to IEC 384-4					

Dimensions



(unit : mm)

φD	4	5	6.3
F	1.5	2.0	2.5
φd	0.45	0.45	0.45

Size List

μF \ V	6.3		10		16		25		35		50				
0.10											4×7	30			
0.22											4×7	16			
0.33											4×7	13			
0.47											4×7	12			
1.0											4×7	10			
2.2											4×7	7.8			
3.3											4×7	6.2			
4.7											4×7	6.2			
10					4×7	4.2	50	5×7	2.0	85	5×7	3.1	70		
22	4×7	4.2	50	5×7	2.0	85	5×7	2.0	85	6.3×7	1.2	120	6.3×7	1.6	100
33	5×7	2.0	85	5×7	2.0	85	6.3×7	1.2	120	6.3×7	1.2	120	6.3×7	1.6	100
47	5×7	2.0	85	6.3×7	1.2	120	6.3×7	1.2	120	6.3×7	1.2	120	6.3×7	1.6	100
100	6.3×7	1.2	120	6.3×7	1.2	120	6.3×7	1.2	120	6.3×7	1.2	120	6.3×7	1.6	100
220	6.3×7	1.2	120	6.3×7	1.2	120	6.3×7	1.2	120	6.3×7	1.2	120	6.3×7	1.6	100
330	6.3×7	1.2	120	6.3×7	1.2	120	6.3×7	1.2	120	6.3×7	1.2	120	6.3×7	1.6	100

Case size

Ripple current
Impedance

Case size ; φD×L (mm)

Impedance ; (Ω) MAX. at 100kHz, 20°C

Maximum permissible ripple current ; (mA r.m.s) at 100kHz, 105°C

Model No. 16MV10SZ

10μF, nominal capacitance

16V, rated voltage