



7mm in length, Standard products
(solvent proof)

SWB
Series



IEC pub. 384-4 approved
SWB series measure 7mm in length.
Increase range of capacitance on 6.3mm diameter products.
Solvent proof (within 3 minutes).

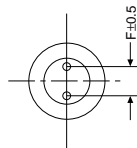
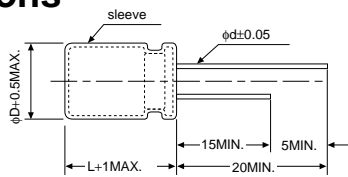


Specifications

Items		Specifications							
Rated voltage (V)		4	6.3	10	16	25	35	50	63
Operating temperature (°C)		-40 to +85							
Capacitance tolerance (%)		±20 (120Hz)							
Tangent of loss angle(tan δ)(MAX.)(120Hz)		0.35	0.24	0.20	0.16	0.14	0.12	0.10	0.10
Leakage current (L.C.)(μA/after 2min.)(MAX.)		The greater value of either 0.01CV or 3							
Impedance (120Hz) ratio at low temperature (MAX.)	Z _{-25°C} /Z _{20°C}	7	4	3	2	2	2	2	2
	Z _{-40°C} /Z _{20°C}	15	10	7	6	4	4	4	4
High-temperature load 85°C 2000hrs. rated voltage applied	ΔC/C	Within ±25% of the initial value							
	tan δ	≤ Twice the initial standard							
	L.C.	≤ The initial standard							
Other characteristics		Conform to IEC 384-4							

Ripple current is shown on page 49.

Dimensions



(unit : mm)

φD	4	5	6.3
F	1.5	2.0	2.5
φd	0.45	0.45	0.45

Size List

(φD×Lmm)

μF \ V	4	6.3	10	16	25	35	50	63
0.10							4×7	4×7
0.22							4×7	4×7
0.33							4×7	4×7
0.47							4×7	4×7
1.0							4×7	4×7
2.2							4×7	4×7
3.3					4×7	4×7	4×7	4×7
4.7					4×7	4×7	4×7	5×7
10				4×7	4×7	5×7	5×7	6.3×7
22		4×7	4×7	4×7	5×7	6.3×7	6.3×7	6.3×7
33	4×7	4×7	4×7	5×7	6.3×7	6.3×7	6.3×7	6.3×7
47	4×7	4×7	5×7	5×7	6.3×7	6.3×7	6.3×7	6.3×7
100	5×7	5×7	6.3×7	6.3×7	6.3×7	6.3×7		
150				6.3×7				
220	6.3×7	6.3×7	6.3×7	6.3×7				
330	6.3×7	6.3×7						
470	6.3×7							

Model No. 16MV33SWB
 └── 33μF, nominal capacitance
 └── 16V, rated voltage