

125°C, Extra long life , High performance (solvent proof)



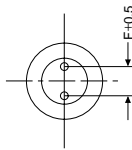
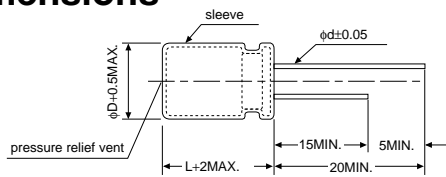
PX series has stable characteristics at the temperature of wide range (−55 to +125°C). Also PX series has low impedance at high frequency, long life and solvent proof (within 5 minutes).



Specifications

Items		Specifications				
Rated voltage (V)		10	16	25	35	50
Operating temperature range (°C)		−55 to +105				
Capacitance tolerance (%)		±20 (120Hz)				
Tangent of loss angle (tan δ) (MAX.)		0.20	0.16	0.14	0.12	0.10
		0.02 to be added to the above value every time nominal capacitance exceeds 1000μF. (120Hz)				
Leakage current (L.C.)(μA/after 2min.)(MAX.)		The greater value of either 0.01CV or 3				
Impedance (120Hz) ratio at low temperature (MAX.)	Z _{−40°C} /Z _{20°C}	2	2	2	2	2
	Z _{−55°C} /Z _{20°C}	4	3	3	3	2
High-temperature load rated voltage applied	Test	125°C 2000hrs. (φD=8, 1000hrs.)				
	ΔC/C	Within ±25% of the initial value				
	tan δ	≤ Twice the initial standard				
	L.C.	≤ The initial standard				
Other characteristics		Conform to IEC 384-4				

Dimensions



(unit : mm)

φD	8	10	12.5	16
F	3.5	5.0	5.0	7.5
φd	0.6	0.6	0.6	0.8

Size List

V μF	10			16			25			35			50		
	Case Size mm φD×L	Impedance (ΩMAX.) 20°C/100kHz	Ripple current (mArms) 125°C/10k to 100kHz	Case Size mm φD×L	Impedance (ΩMAX.) 20°C/100kHz	Ripple current (mArms) 125°C/10k to 100kHz	Case Size mm φD×L	Impedance (ΩMAX.) 20°C/100kHz	Ripple current (mArms) 125°C/10k to 100kHz	Case Size mm φD×L	Impedance (ΩMAX.) 20°C/100kHz	Ripple current (mArms) 125°C/10k to 100kHz	Case Size mm φD×L	Impedance (ΩMAX.) 20°C/100kHz	Ripple current (mArms) 125°C/10k to 100kHz
1.0													8×11.5	2.0	28
2.2													8×11.5	1.8	42
3.3													8×11.5	1.5	49
4.7													8×11.5	1.15	70
10													8×11.5	0.95	150
22													8×11.5	0.65	210
33													8×12.5	0.45	230
47												8×12.5	0.45	230	
100				8×11.5	0.39	250	8×12.5	0.26	280	10×12.5	0.35	315	10×12.5	0.35	315
220	8×12.5	0.26	280	10×12.5	0.20	350	10×12.5	0.17	380	10×16	0.29	420	10×20	0.20	560
330	10×12.5	0.20	350	10×12.5	0.17	380	10×16	0.15	490	10×20	0.20	560	12.5×20	0.12	630
470	10×12.5	0.17	380	10×16	0.15	490	10×20	0.12	590	12.5×20	0.12	630	12.5×25	0.10	770
1000	10×20	0.12	590	12.5×20	0.073	770	12.5×25	0.050	1050	16×25	0.058	980	16×31.5	0.045	1200
2200	12.5×25	0.050	1050	16×25	0.044	1150	16×31.5	0.030	1500						
3300	16×25	0.044	1150	16×31.5	0.030	1500									
4700	16×31.5	0.030	1500												

Model No. 50MV220PX

